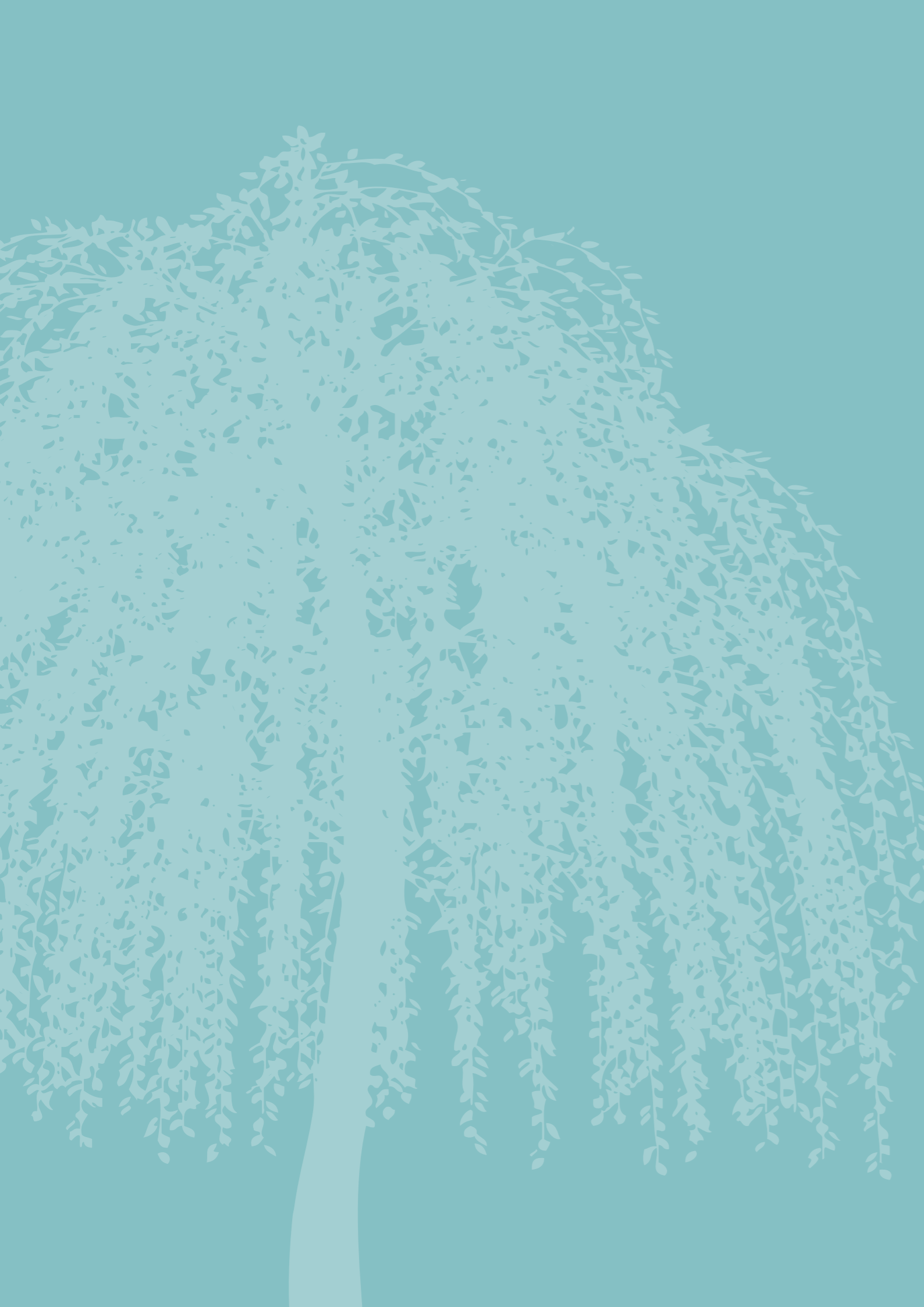




W I L L O W P A R K

W I L L O W P A R K • L E I G H R O A D • H A V A N T

A stunning new development of 31 apartments



C O N T E N T S

Willow Park CGI	2
Willow Park Satellite Image	4
About Havant	6
The Coast	8
On Your Doorstep	10
Finding Willow Park	12
Seasons	14
Business Opportunity	16
Getting Around	17
Introduction to the Apartments	18
Site Plan	24
Specifications	28
Amenities	29
About Fortitudo	30
Help to Buy	129

"A collection of thirty-one well-proportioned & exquisitely designed one & two bedroom apartments."





WILLOW PARK
Satellite Image of Havant, Hampshire



ABOUT HAVANT

Old mill on the quay at Langstone on the Hampshire coast / Portsmouth Harbour

This striking development is situated in Havant, and in walking distance to the centre of the town where there is a collection of restaurants, shops, and bars. There are a host of excellent local transport linked and easy access to picturesque scenes of Portsmouth Harbour.



THE COAST

- ✓ *Hayling Island*
- ✓ *Sailing*
- ✓ *Beaches*



Hayling Island Beach



ON YOUR DOORSTEP

SHOPPING

The city centre benefits from shopping centres, with national chains, high street brands and local independent stores, plus many different eateries. Furthering this, just a short drive from Havant there is the vibrant town of Portsmouth and Chichester, which leaves you spoilt for choice when it comes to shopping. Chichester's city centre is a great place to spend the day shopping, there is plenty of parking, a wide variety of high street brands, but also independent retailers as well as regular markets and fairs, you're sure to find what you're looking for.



Market Stall



Hayling Island



Winchester Cathedral

MARKETS

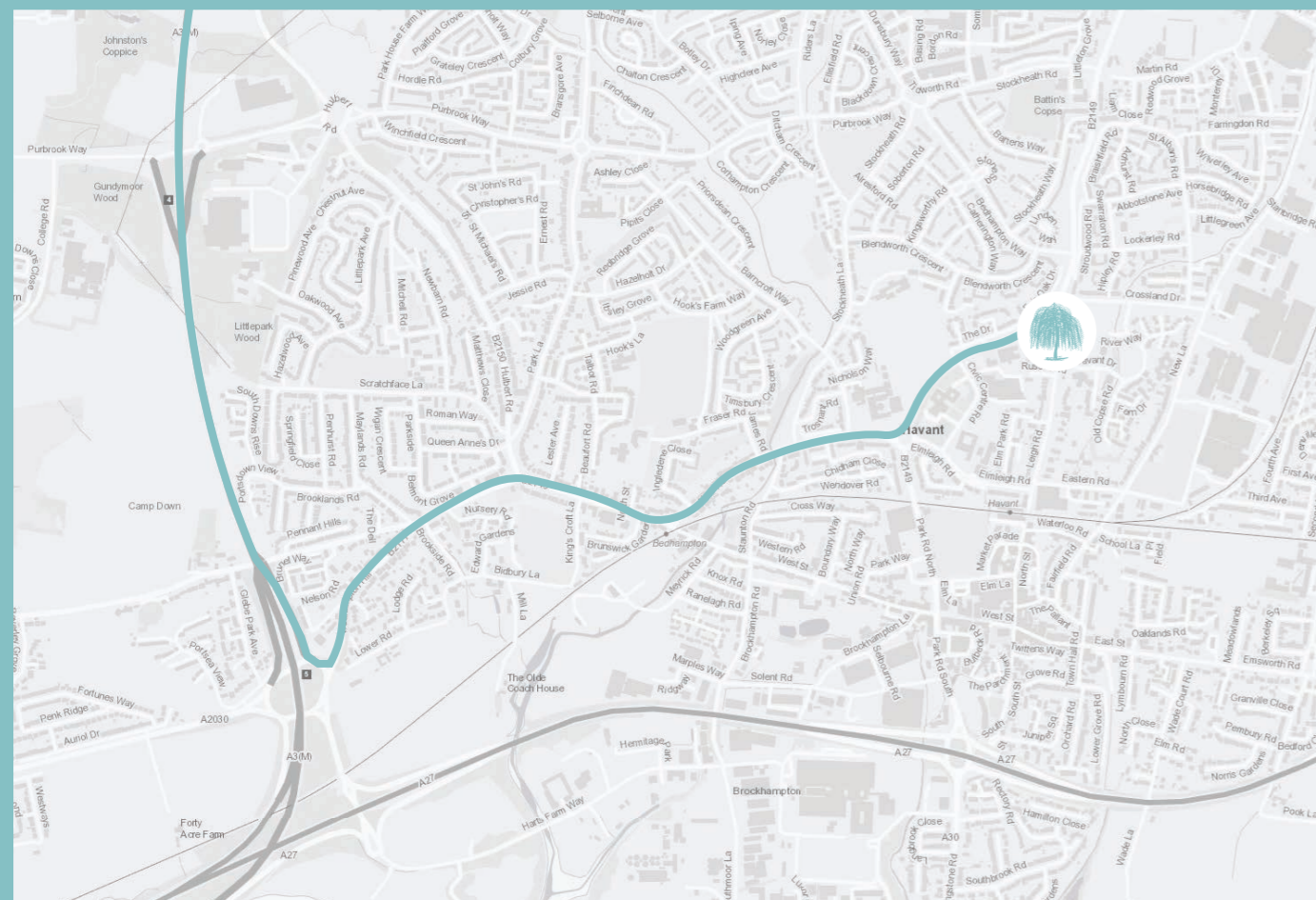
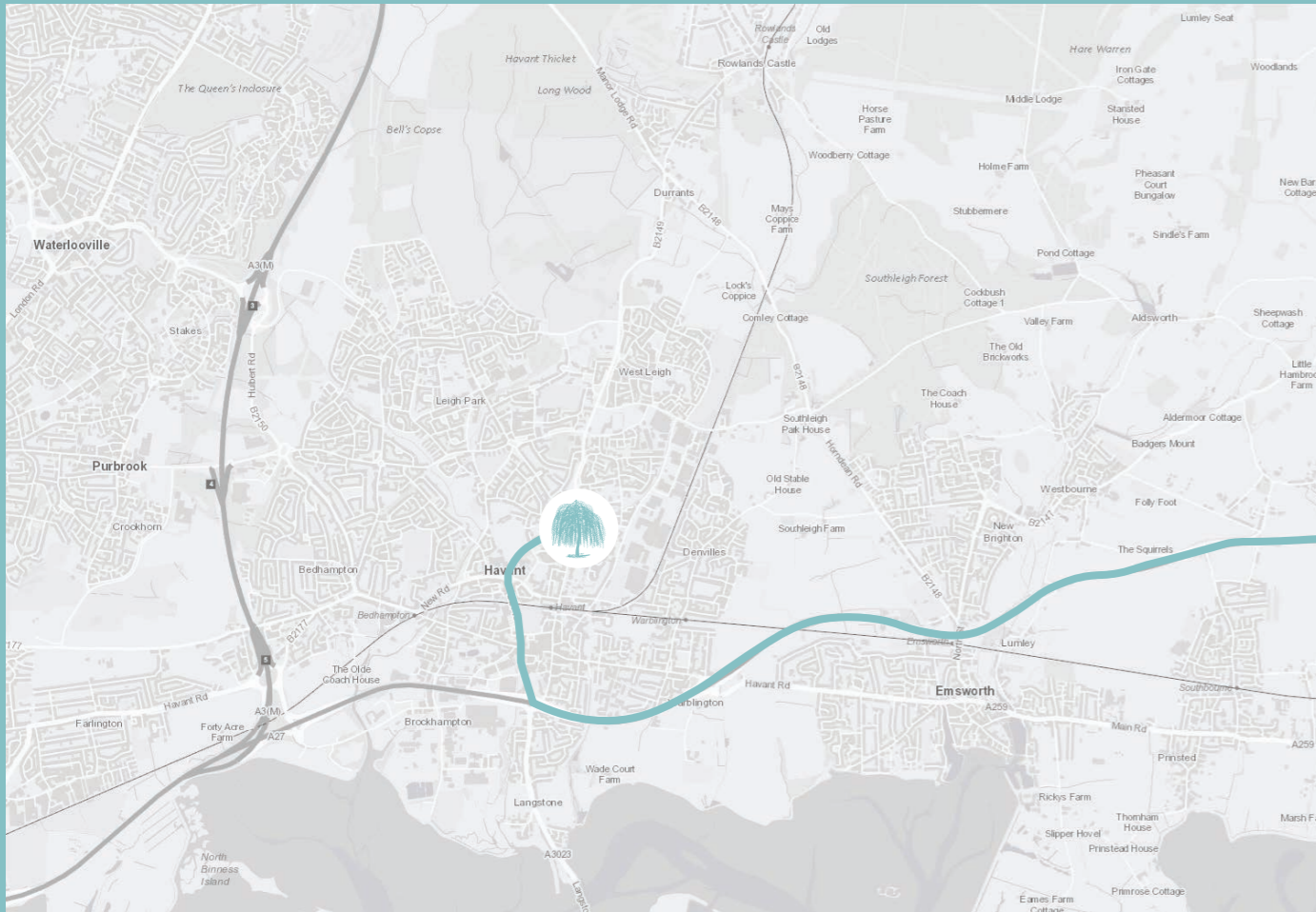
The market town of Havant is very much a thriving local community, with a traditional weekly market with fresh fruit and veg, held on West street every Monday. Alongside this, there is an Artisan market held on the first Saturday of every month selling a wide array of produce from across the southern region.

LEISURE

Havant is home to many excellent leisure facilities with gyms, swimming pools and play parks. There is also a host of leisure based activities such as Staunton Park, which has an indoor play area and children can spend their day feeding and watching the farm animals. Other local amenities include the Sailing club at Hayling Harbour at just under 4.6 miles away and much more. On top of the large shopping choice, you also have many top restaurants with over 30 delicious options to choose between, from Italian, French, Asian and Japanese style cuisine. Moreover, there is a range of leisure facilities including a Vue Cinema, Hollywood Bowl and Grosvenor Casino.

OUT AND ABOUT

There are many cultural hot spots in and around Havant, such as the historic city of Winchester and family attractions including Marwell Zoo. The racecourse of Goodwood is just a short drive, which holds races annually at the end of July. You also have the option of catching a short ferry to Hayling Island, where you can enjoy the islands miles of un-spoilt coastline and country-side also offer a haven of peaceful tranquillity. If the countryside is more along the lines of what you are looking for, the South Downs National Park is approximately 13 miles away, offering country pubs, picturesque walks, horse riding and cycling.



FINDING WILLOW PARK

GETTING TO WILLOW PARK

Willow Park is situated just to the north of Havant Centre on Leigh Road and just under 0.3 miles from Havant train station, with direct links to London Waterloo and London Victoria Station. Willow Park is perfectly situated to make the most of what the town has to offer.

DIRECTIONS HEADING NORTH FROM THE A27:

Leave the A27 signposted to Havant Town Centre – exit the roundabout heading north on Park Road North – Continue north passed the Meridian Shopping Centre and Havant Park – At the next roundabout take the third exit on to Elmleigh Road – At the end of the road turn left on to Leigh Road – follow the road north to the quiet cul-de-sac where you will find the entrance to Willow Park.

DIRECTIONS HEADING SOUTH ON THE B2149:

Entering Havant from the north on the B2149 Petersfield Road – passed Havant and Waterlooville football club – At the next roundabout take the first exit on to Elmleigh Road - At the end of the road turn left on to Leigh Road – follow the road north to the quiet cul-de-sac where you will find the entrance to Willow Park.

SPRING

RURAL AND SEASIDE SHOW PORTSMOUTH

(5th May - 7th May) - A show that brings the countryside to the seaside, for the best of both worlds and is a great day out for all the family.

SPRING EASTER FAMILY FUN DAY

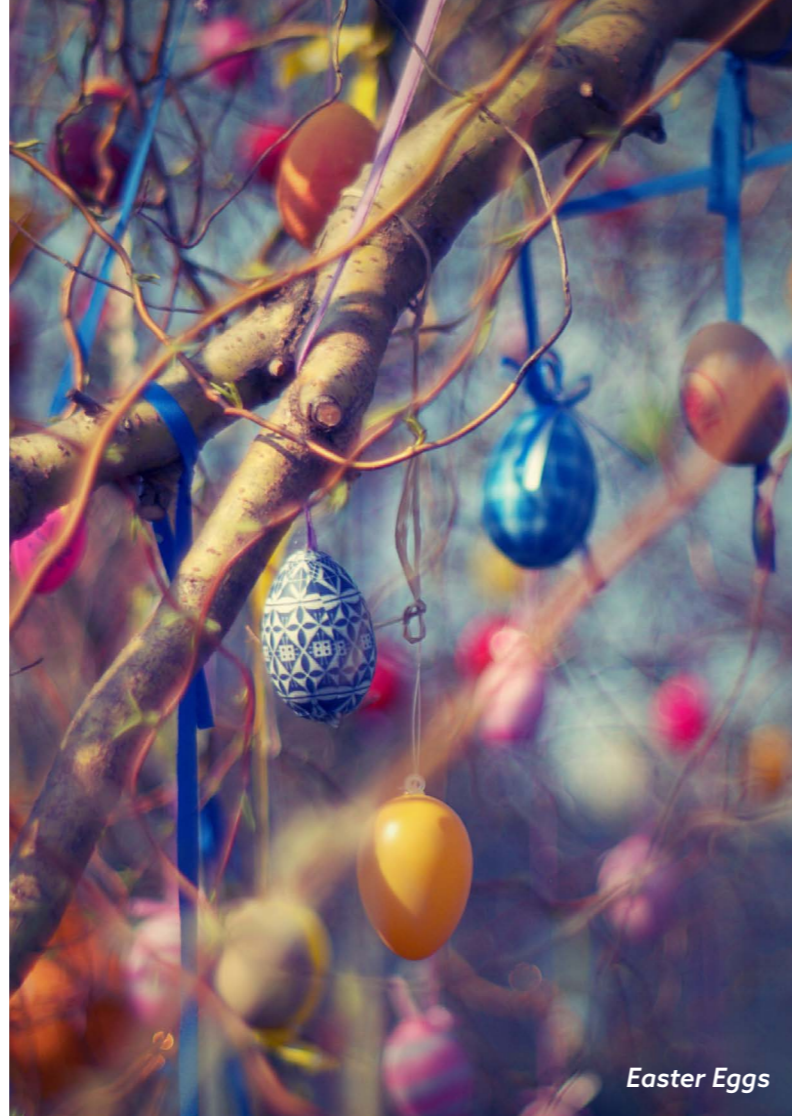
(11th April) - Head down to Guildhall Square for a fun day out, full of activities, good food and live music.

CHICHESTER CATHEDRAL PEREGRINES PROJECT

(28th April) - A free event for the family to come and enjoy a day filled with bird watching, as they begin their life.

MOONLIGHT WALK CHICHESTER

(5TH May) - 10 Mile sponsored Walk around Chichester starting at midnight. In aid of St Wilfrid's Hospice.



Easter Eggs



Fireworks

SUMMER

FESTIVAL OF CHICHESTER

(15th June - 15th July) - The festival of Chichester runs for a month-long celebration of arts from mid-June to mid-July. With over 250 events all over the city and beyond, there is something for everyone.

HAVANT FAMILY FUN DAY

(16th July) - Free event held at Havant Park. There is something for everyone, from face painting, to food stalls to bouncy castles and music.

FESTIVAL OF SPEED GOODWOOD

(4th July - 7th July) A huge celebration of fast cars. One of Britain's biggest motor racing festivals, it will be a full day of action and excitement, a great day out for the family.

HAYLING ISLAND LIFEBOAT STATION OPEN DAY

(31st July) - Meet the lifeboat crew at this fun day for all the family. You will experience spectacular displays for all the family to enjoy.

HAYLING FOR ST GEORGE

(7th August) - Join the Hayling community for their annual St Georges celebration. Music will be performed at The Plaza on Eastoke Corner.

VICTORIOUS FESTIVAL

(23rd August - 25th August) - A three-day music festival held in Southsea, Portsmouth.



Fast Cars



Christmas Tree

AUTUMN

OKTOBERFEST PORTSMOUTH

(5 October - 6th October) - Grab some traditional German beer from the outdoor drink court as you raise your steins at Oktoberfest Portsmouth.

GOODWOOD SEASON FINALE

(14th October) - Share in the celebration as we say farewell to our season in true style at this traditional, rural-themed, end-of-year fixture. The event provides one final chance to experience racing at Goodwood in all its glory before the winter break.

NEW FOREST FOOD & DRINK WEEK

(29th October - 4th November) - A week-long celebration of the New Forests amazing producers, farmers, shops, restaurants, pubs, tearooms, kitchen, chefs, cooks.

WINCHESTER BONFIRE & FIREWORKS

(3rd November) - each year, the city of Winchester gather to experience the lighting of the Bonfire and the spectacular fireworks display.

HAYLING ISLAND GIN FESTIVAL

(3rd November) - A small independent festival is driven by passion and the desire to explore new and exciting new gins.

GUNWHARF QUAYS FIREWORK DISPLAY

(8th November) - This is one of the most renowned firework displays down south, and this year's entertainment is set to be bigger and better than ever before. The centre will kick-start the festival season with a night packed full of entertainment.

PORTSMOUTH GHOST TOUR

(12th November 2019) - Portsmouth bloodiest ghostly tales on this chilling new adaptation of a classic ghost tour. The question is are you brave enough?

WINTER

CHRISTMAS AT MARWELL

(17th November - 24th December) - Join Marwell for an enchanted Christmas, great day out for your family.

PORTSMOUTH ICE RINK AT GUILDHALL SQUARE

(17th November - 6th January) - Get your skates on this festive season and take to the ice as Portsmouth's Guildhall Square is transformed into a winter wonderland.

THE DICKENS CHRISTMAS FESTIVAL AT PORTSMOUTH HISTORIC DOCKYARD

(30th November - 2nd December) - Travel back in time to a bygone era, where snowy Dickensian streets welcome you to a world of festival cheer, as you enjoy one of the south's finest Christmas festivals.

PORTSMOUTH BEER FESTIVAL

(22nd December) - A little something to get you in the Christmas spirit, with a great atmosphere and superb entertainment.

ICE BREAKER FESTIVAL

(2nd - 3rd February) - This music festival has an amazing lineup of local and fast-rising bands. There are over 130 sets played in 13 venues over the two days, this is not one to miss!



Portsmouth Harbour

GETTING AROUND

(approximate journey times)



HAVANT > CHICHESTER	10 mins
HAVANT > PORTSMOUTH	12 minutes
HAVANT > WINCHESTER	55 minutes
HAVANT > LONDON	1 hour 13 minutes



HAVANT > CHICHESTER	20 mins
HAVANT > PORTSMOUTH	20 mins
HAVANT > WINCHESTER	55 minutes
HAVANT > LONDON	2hours 20 minutes



HAVANT > CHICHESTER	36 mins
HAVANT > PORTSMOUTH	36 mins
HAVANT > WINCHESTER	1 hour 22 minutes
HAVANT > LONDON	2hours 50 minutes

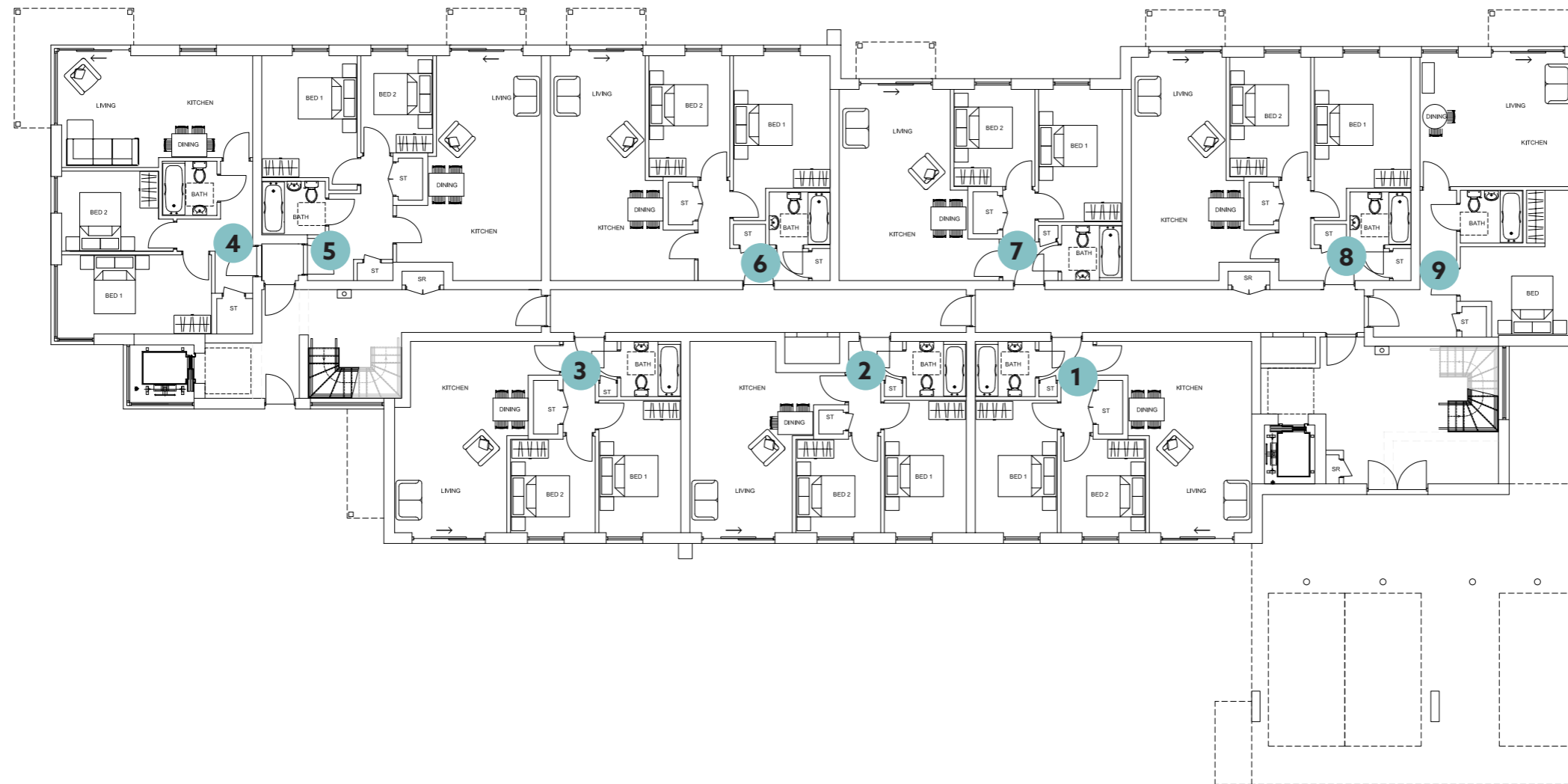
INTRODUCTION TO THE APARTMENTS

A classic design for a new way of living

Fortitudo are delighted to bring to the market, Willow park. This stunning development of thirty-one, one and two bedroom apartments. The apartments have a modern feel, having been designed with a contemporary theme in mind. This shines through not only in the external design but also the internal finish of the apartments and exterior landscaping.

GROUND FLOOR

* All measurements are taken to the maximum dimension of the room



UNIT 1

Kitchen / Living / Dining Room -
5 x 6.3, 16'4" x 20'7"
Bedroom 1 - 2.6 x 4.4, 8'5" x 14'4"
Bedroom 2 - 2.6 x 3.1, 8'5" x 10'2"

UNIT 2

Kitchen / Living / Dining Room -
5 x 6.3, 16'4" x 20'7"
Bedroom 1 - 2.6 x 4.4, 8'5" x 14'4"
Bedroom 2 - 2.6 x 3.1, 8'5" x 10'2"

UNIT 3

Kitchen / Living / Dining Room -
4.5 x 6.3, 14'8" x 20'7"
Bedroom 1 - 2.6 x 4.4, 8'5" x 14'4"
Bedroom 2 - 2.6 x 3.1, 8'5" x 10'2"

UNIT 4

Kitchen / Living / Dining Room -
6.2 x 3.6, 20'3" x 11'8"
Bedroom 1 - 4.9 x 2.6, 16'1" x 8'5"
Bedroom 2 - 3.6 x 2.5, 9'8" x 8'2"

UNIT 5

Kitchen / Living / Dining Room -
4.6 x 7.4, 15'1" x 24'3"
Bedroom 1 - 3 x 4.4, 9'84" x 14'4"
Bedroom 2 - 2.3 x 3.3, 7'54" x 10'8"

UNIT 6

Kitchen / Living / Dining Room -
4.6 x 7.4, 15'1" x 24'3"
Bedroom 1 - 3.1 x 5.3, 10'22" x 17'4"
Bedroom 2 - 2.6 x 3.9, 8'5" x 12'8"

UNIT 7

Kitchen / Living / Dining Room -
5.1 x 6.3, 16'7" x 20'7"
Bedroom 1 - 2.6 x 4.3, 8'5" x 14'1"
Bedroom 2 - 2.6 x 3.2, 8'5" x 10'5"

UNIT 8

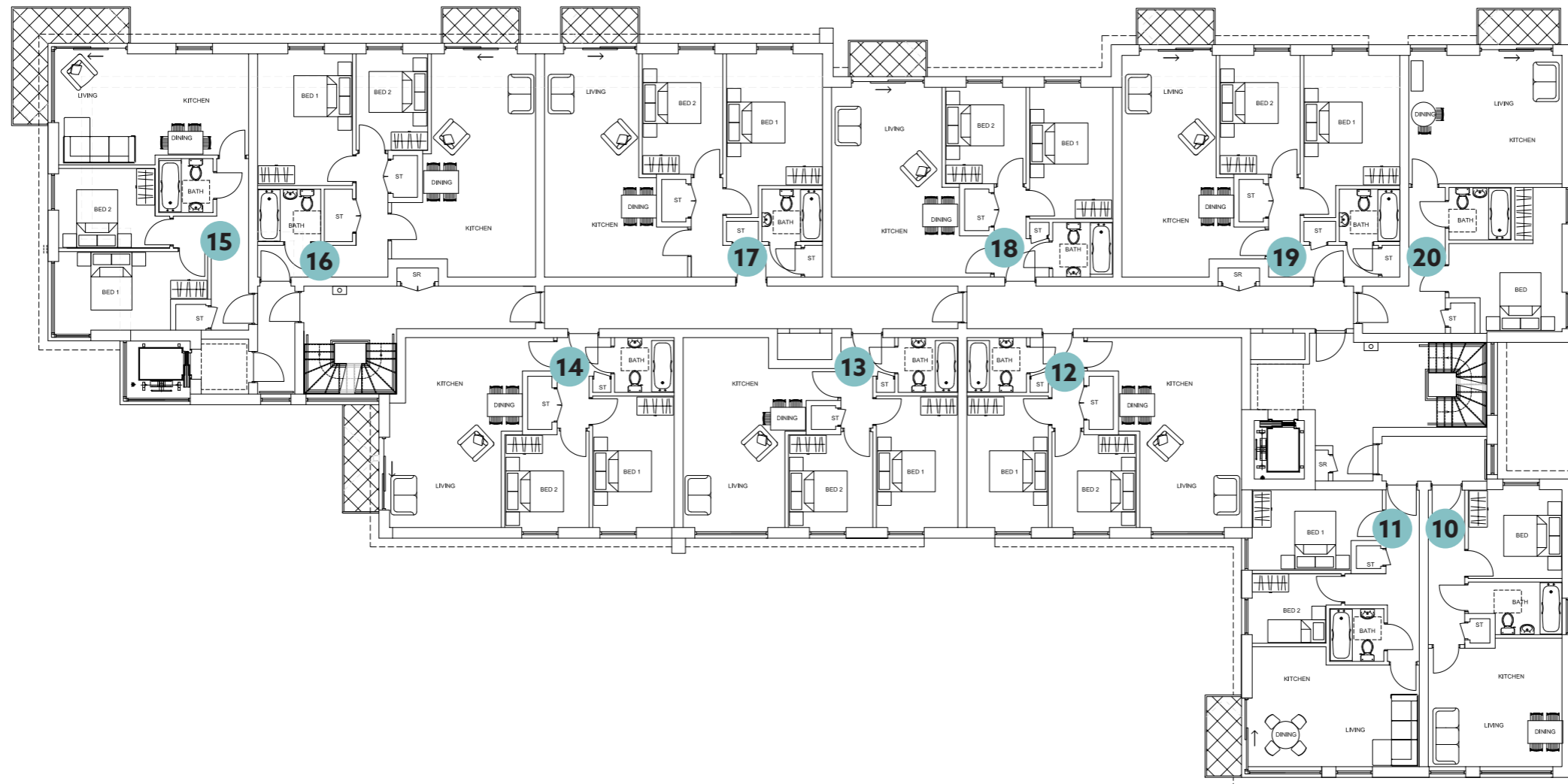
Kitchen / Living / Dining Room -
4.6 x 7.3, 15'1" x 24'
Bedroom 1 - 3.1 x 5.6, 10'2" x 18'4"
Bedroom 2 - 2.6 x 3.9, 8'5" x 12'8"

UNIT 9

Kitchen / Living / Dining Room -
Bedroom 1 - 3.7 x 4.7, 12'1" x 15'4"

FIRST FLOOR

* All measurements are taken to the maximum dimension of the room



UNIT 10

Kitchen / Living / Dining Room -
4.3 x 4.1, 14'1" x 13'5"
Bedroom 1 - 3 x 3, 9'8" x 9'8"

UNIT 11

Kitchen / Living / Dining Room -
5.5 x 3.9, 18' x 12'8"
Bedroom 1 - 4.4 x 2.5, 14'4" x 8'2"
Bedroom 2 - 3 x 2.2, 9'8" x 7'2"

UNIT 12

Kitchen / Living / Dining Room -
4.9 x 6.2, 16'1" x 20'3"
Bedroom 1 - 2.6 x 4.3, 8'5" x 14'4"
Bedroom 2 - 2.6 x 4.3, 8'5" x 14'4"

UNIT 13

Kitchen / Living / Dining Room -
5 x 6.2, 16'4" x 20'3"
Bedroom 1 - 2.6 x 4.3, 8'5" x 14'4"
Bedroom 2 - 2.7 x 3.1, 8'9" x 10'2"

UNIT 14

Kitchen / Living / Dining Room -
4.4 x 6.1, 14'4" x 20'
Bedroom 1 - 2.6 x 4.4, 8'5" x 14'4"
Bedroom 2 - 2.7 x 3.1, 8'9" x 10'2"

UNIT 15

Kitchen / Living / Dining Room -
6.2 x 3.5, 20'3" x 11'5"
Bedroom 1 - 3 x 4.4, 9'8" x 14'4"
Bedroom 2 - 2.3 x 3.3, 7'5" x 10'8"

UNIT 16

Kitchen / Living / Dining Room -
4.6 x 7.3, 15'1" x 24'
Bedroom 1 - 3 x 4.4, 9'8" x 14'4"
Bedroom 2 - 2.3 x 3.3, 7'54" x 10'8"

UNIT 17

Kitchen / Living / Dining Room -
4.6 x 7.3, 15'1" x 24'
Bedroom 1 - 3.1 x 5.3, 10'2" x 17'4"
Bedroom 2 - 2.6 x 4, 8'5" x 13'1"

UNIT 18

Kitchen / Living / Dining Room -
5.1 x 6.3, 16'7" x 20'7"
Bedroom 1 - 2.7 x 4.4, 8'9" x 14'4"
Bedroom 2 - 2.5 x 3.2, 8'2" x 10'5"

UNIT 19

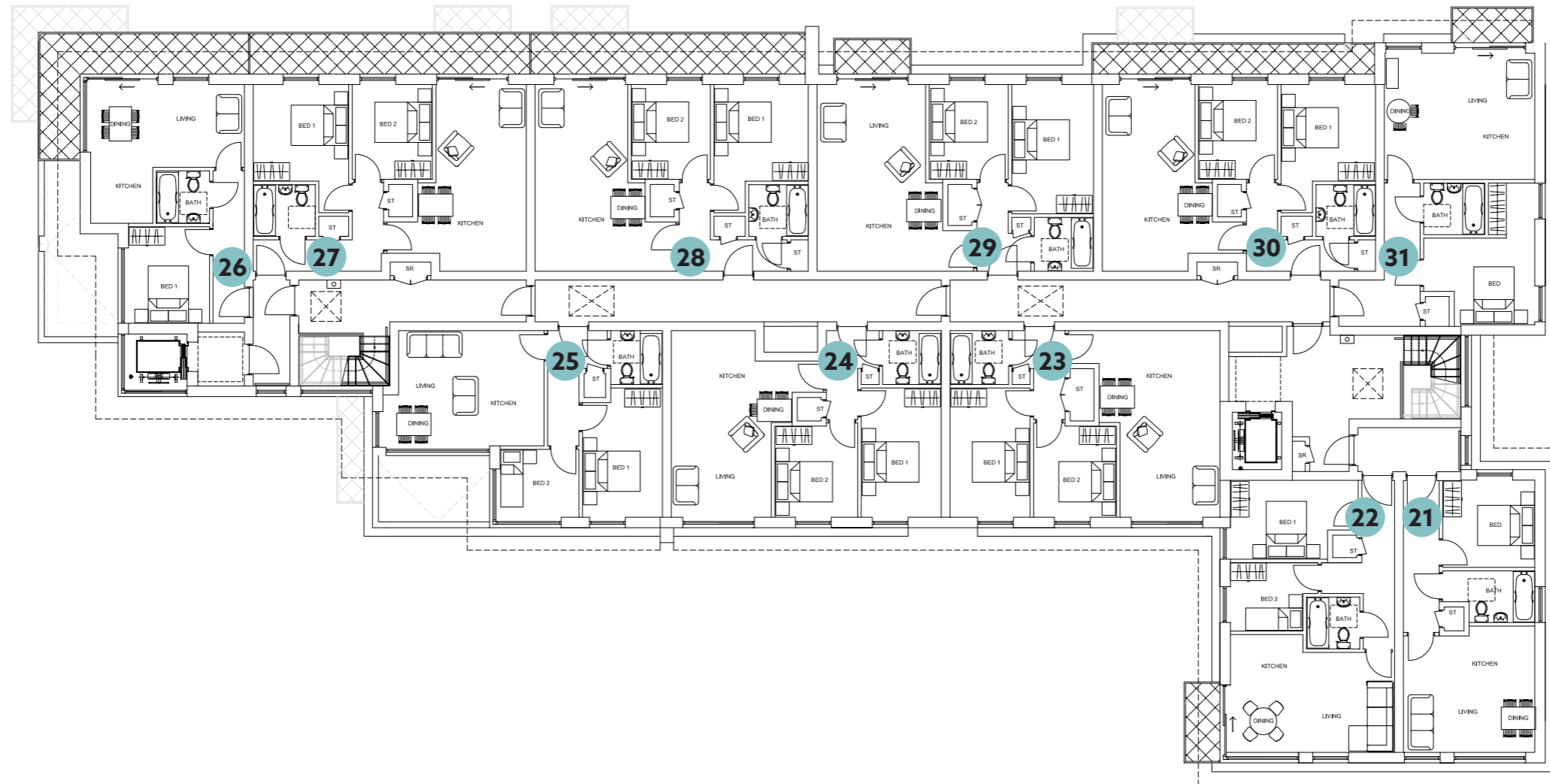
Kitchen / Living / Dining Room -
4.6 x 7.3, 15'1" x 24'
Bedroom 1 - 3.1 x 5.1, 10'2" x 16'7"
Bedroom 2 - 2.5 x 4, 8'2" x 13'1"

UNIT 20

Kitchen / Living / Dining Room -
4.9 x 4.4, 16'1" x 14'4"
Bedroom 1 - 3.6 x 4.6, 11'8" x 15'1"

SECOND FLOOR

* All measurements are taken to the maximum dimension of the room



UNIT 21

Kitchen / Living / Dining Room -
4.3 x 4.1, 14'1" x 13'5"
Bedroom 1 - 3 x 3, 9'8" x 9'8"

UNIT 22

Kitchen / Living / Dining Room -
5.5 x 3.9, 18' x 12'8"
Bedroom 1 - 4.1 x 2.5, 13'5" x 8'2"
Bedroom 2 - 3 x 2.2, 9'8" x 7'2"

UNIT 23

Kitchen / Living / Dining Room -
5 x 6.3, 16'4" x 20'7"
Bedroom 1 - 2.6 x 4.3, 8'5" x 14'4"
Bedroom 2 - 2.7 x 3.1, 8'9" x 10'2"

UNIT 24

Kitchen / Living / Dining Room -
5 x 6.3, 16'7" x 20'3"
Bedroom 1 - 2.6 x 4.3, 8'5" x 14'4"
Bedroom 2 - 2.6 x 3.1, 8'9" x 10'2"

UNIT 25

Kitchen / Living / Dining Room -
5.2 x 3.9, 17'1" x 20'3"
Bedroom 1 - 2.6 x 4.3, 8'5" x 14'1"
Bedroom 2 - 2.5 x 2.7, 8'2" x 8'9"

UNIT 26

Kitchen / Living / Dining Room -
5.2 x 4.7, 17'1" x 15'4"
Bedroom 1 - 2.7 x 3.1, 8'9" x 10'2"

UNIT 27

Kitchen / Living / Dining Room -
4.6 x 6.3, 15'1" x 20'7"
Bedroom 1 - 3 x 3.3, 9'8" x 16'7"
Bedroom 2 - 2.3 x 2.2, 8'2" x 13'1"

UNIT 28

Kitchen / Living / Dining Room -
4.6 x 6.2, 15'1" x 20'3"
Bedroom 1 - 3.1 x 4.3, 3.1 x 4.3
Bedroom 2 - 2.6 x 3.2, 8'5" x 10'5"

UNIT 29

Kitchen / Living / Dining Room -
5.1 x 6.2, 16'7" x 20'3"
Bedroom 1 - 2.6 x 4.4, 8'5" x 14'4"
Bedroom 2 - 2.6 x 3.2, 8'5" x 10'5"

UNIT 30

Kitchen / Living / Dining Room -
4.6 x 6.2, 15'1" x 20'3"
Bedroom 1 - 3.1 x 4.2, 10'2" x 13'8"
Bedroom 2 - 2.6 x 3.2, 8'5" x 10'5"

UNIT 31

Kitchen / Living / Dining Room -
4.9 x 4.4, 16'1" x 14'4"
Bedroom 1 - 3.6 x 4.6, 11'8" x 15'1"

S I T E P L A N





SPECIFICATIONS THE FINER DETAILS

COMMUNAL

- Individual door entry system
- Allocated Parking and additional visitor parking
- Bicycle store
- Bin store
- Block paved and landscaped communal gardens

KITCHEN

- Quality fitted kitchens
- Build in Oven, Hob and extractor, Dishwasher
- Fridge, Washer / Dryer

BATHROOM

- Fully tiled bathroom
- Enclosed bath, with shower over
- Wash hand basin

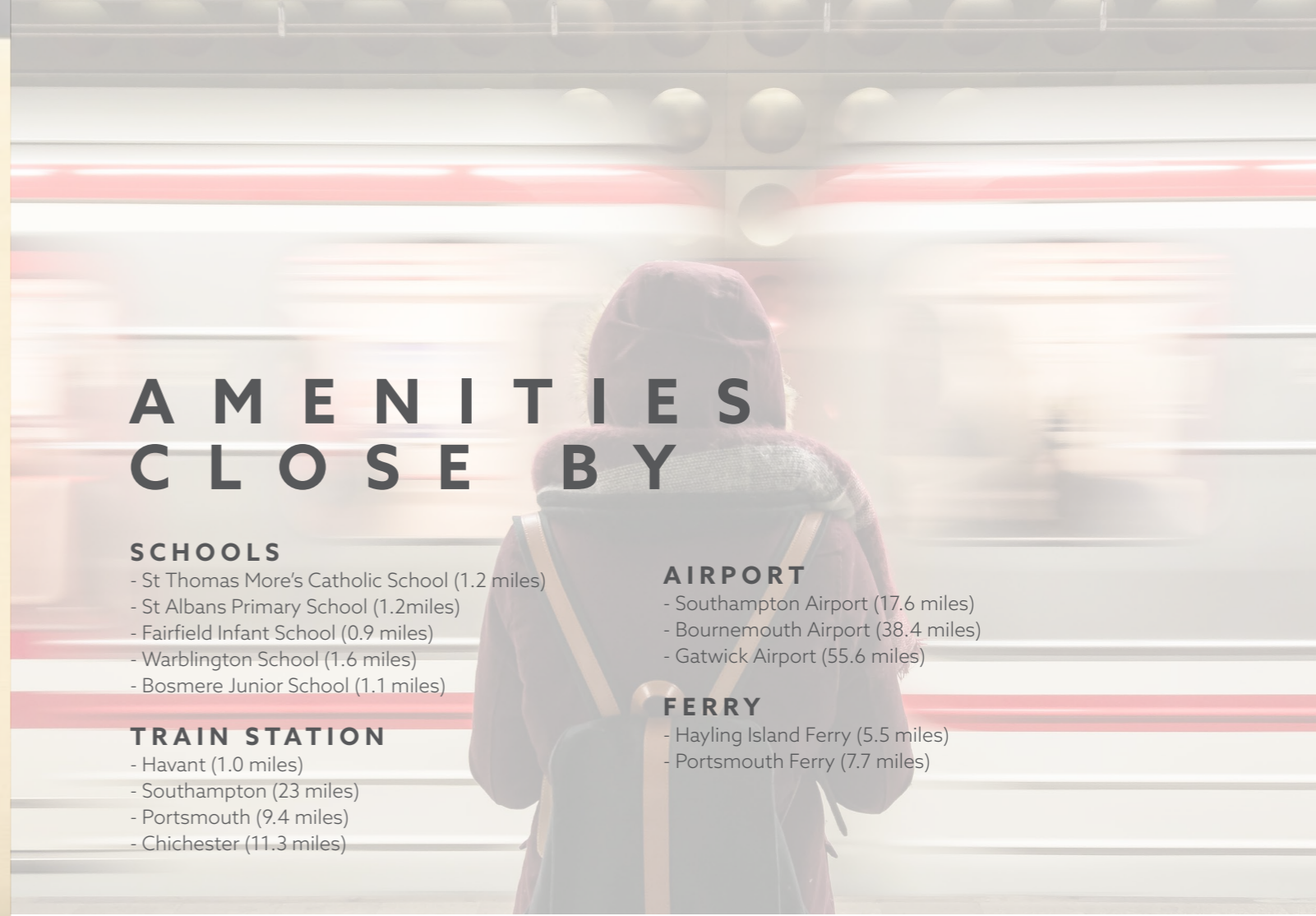
- Low level WC
- Heated towel rail
- Extractor fan

GENERAL

- TV point in living area and master bedroom
- Telephone / Broadband point in living area
- Double glazed sliding patio door to outside space

WARRANTY

- 10 yea ICW building warranty



AMENITIES CLOSE BY

SCHOOLS

- St Thomas More's Catholic School (1.2 miles)
- St Albans Primary School (1.2miles)
- Fairfield Infant School (0.9 miles)
- Warblington School (1.6 miles)
- Bosmere Junior School (1.1 miles)

TRAIN STATION

- Havant (1.0 miles)
- Southampton (23 miles)
- Portsmouth (9.4 miles)
- Chichester (11.3 miles)

AIRPORT

- Southampton Airport (17.6 miles)
- Bournemouth Airport (38.4 miles)
- Gatwick Airport (55.6 miles)

FERRY

- Hayling Island Ferry (5.5 miles)
- Portsmouth Ferry (7.7 miles)



OTHER AMENITIES

RESTAURANTS

- Poppins Restaurant
- Red Chili
- Aroma Oriental
- Café Nero
- Havant Tandoori

SHOPPING FACILITIES

- Meridian Shopping Centre
- Greywell Shopping Centre
- Tesco Havant Extra
- Aldi Shopping

GYM AND LEISURE CENTRES

- Havant Health Centre
- Moods fitness Studio Havant
- Leigh Fitness
- Curve Fit Within Moods Fitness Studio

HOSPITALS

- Havant NHS Diagnostic Centre
- Bupa Health Centre Havant
- Elmleigh Hospital
- Havant Health Centre

fortitudo

ABOUT FORTITUDO

Fortitudo are delighted to bring to the market Willow Park, an exciting new development. Fortitudo work alongside the most experienced businesses in the industry, and promise in delivering excellence. Our developments have enabled people to finally get on the property ladder, receiving their keys to their brand new home that's theirs for the very first time. Shape your future with a new horizon. We are skilled in designing, gaining planning and regenerating commercial assets to become commercially viable again, benefitting the local communities they're in. Our bespoke homes turn dreams into realities, sensitive to the lie of the land we find that they supersede the original wishes of the owner.



OPENING THE DOOR TO OWNING YOUR OWN HOME

At Fortitudo, we strive in making first homes more accessible for everyone. The apartments at Willow Park are associated with the government Help to Buy scheme, this enables you to purchase one of these modern new build apartments with just a 5% deposit. The government will lend you an interest-free loan of up to 20% of the property for five years. You may choose to repay your loan at any time, or on the sale of your new home. No longer do you need a large sum of money sitting in the bank to buy a property.

For more information please visit our website.

All help to buy loans are subject to status, and terms and conditions are available on Help to Buy website.

fortitudo

www.fortitudoproperty.com