

BR

REVEAL YOUR TRUE COLOURS



REVEAL YOUR TRUE COLOURS

BR

Welcome to Bruscia

REVEAL YOUR TRUE COLOURS

Tucked beneath the whispering pines and chines of Branksome, Bruscia offers ten luxurious apartments designed for those who appreciate the quiet power of beauty, the richness of detail, and the calm rhythm of refined living. Inspired by the peacock, a creature long admired for its elegance, royalty, and symbolism, Bruscia invites you to inhabit a home that is both meaningful and magnificent.

In Hinduism, the peacock is associated with Lakshmi, the goddess of wealth and prosperity. In Christian tradition, it represents immortality and resurrection. In mysticism, it's a sign of revelation, as the bird unfurls its feathers to display its full brilliance, just as these homes reveal their thoughtful design and timeless character. In some spiritual traditions, the peacock's feathers are also seen as symbols of growth, wisdom, and enlightenment.

This is not simply a place to reside. It is where architecture and emotion meet. Where craftsmanship, comfort, and calm coexist.

A STATEMENT OF SELF



WHAT IF YOUR NEXT HOME COULD
AWAKEN SOMETHING DEEPER
WITHIN YOU – THE BEGINNING
OF A LIFE LIVED IN FULL COLOUR?

A STATEMENT OF SELF

A wide-angle photograph of a sailboat with white sails on a blue sea at sunset. The sky is a mix of orange, pink, and blue. The water is a deep blue with gentle ripples. The sailboat is positioned in the lower-left quadrant of the frame. A semi-transparent dark grey box is overlaid on the right side of the image, containing text.

SET SAIL INTO SERENITY

Embrace the ultimate coastal lifestyle by exploring Poole's stunning waters.

Whether it's a peaceful sunset cruise or a weekend adventure with family and friends, the freedom of the open sea is just moments away. Enjoy Harbour Views and gentle sea breezes!

BEAUTY, ALL AROUND



COASTAL LANDMARKS

From the iconic Durdle Door and its striking limestone arch to the tranquil Man O'War Bay, these scenic spots offer the perfect escape.

Enjoy panoramic views at Old Harry Rocks or explore the unspoiled beauty of Hengistbury Head, a haven for nature lovers. Whether hiking, relaxing, or taking in the sea breeze, these incredible destinations are all within easy reach.



WANDER INTO THE WILD

Just a 30-minute drive from Branksome, the New Forest offers a breath of fresh air with its open heathlands, ancient woodlands, and free-roaming ponies. It's an ideal spot for a weekend escape or a spontaneous outdoor adventure.

Stroll through picturesque villages, cycle along winding trails, or stop for a classic countryside pub lunch. Reconnect with nature!

BEAUTY, ALL AROUND

A photograph of a vineyard with rows of grapevines stretching into the distance. The vines are lush green and have clusters of dark grapes. The ground is covered in grass and fallen leaves. The lighting is bright, suggesting a sunny day. A semi-transparent text box is overlaid on the right side of the image.

A TOAST TO DORSET

Explore local vineyards! English Oak Vineyard near Lytchett Matravers specialises in méthode-champenoise sparkling wines, gaining recognition for their quality. Visitors can enjoy tours and tastings in the picturesque surroundings, making it a perfect spot for a relaxing afternoon.

A little further afield, Furleigh Estate near Britport spans 85 acres, cultivating classic Champagne grape varieties to produce award-winning sparkling wines. This renowned vineyard offers a fantastic experience for wine lovers, with stunning views and expert-led tastings.



A PLACE TO BREATHE

Discover the essence of serene coastal living in Branksome, where natural beauty and refined elegance come together.

Branksome offers a balanced lifestyle between tranquil, leafy surroundings and easy access to everything you need. Whether you're relaxing in the park, enjoying a sunset at the beach, or exploring the vibrant village atmosphere nearby, Branksome provides an elevated living experience. It's the perfect location to call home, with its close-knit community and relaxed atmosphere, all while being just minutes away from the bustling towns of Bournemouth and Poole.

BEAUTY, ALL AROUND



NATURE AWAITS

Just a short stroll from your door, discover the beauty of Branksome's woods and trails - a peaceful journey through lush green landscapes leading to the coast.

Branksome Woods and its scenic trails are perfect for nature enthusiasts, offering serene pathways through rich woodlands, leading to the iconic beaches of Branksome Dene, Branksome Chine, and Canford Cliffs. A hidden gem for those seeking tranquility and connection with nature, these trails are an essential part of the coastal lifestyle.

BEAUTY, ALL AROUND



GAME, SET, MATCH

Only a 2-minute drive from your door, enjoy access to a nearby tennis court - perfect for a friendly match or casual practice.

Located just moments away from Lindsay Road, the well-maintained courts at Branksome Park Tennis are perfect for those who love to stay active. Whether you're looking to challenge friends or refine your serve, this fantastic facility offers an excellent opportunity for fitness and fun.



SAVOUR THE EVENING

From exquisite seafood to elegant bistros, indulge in a dining experience that perfectly complements coastal living.

Explore a range of exceptional dining options just moments from your doorstep. Indulge in exquisite cuisine with an ocean view at Sandbanks, where dining experiences are elevated by the stunning coastal backdrop. From fresh seafood at Rick Stein to the refined flavours of The Cliff Restaurant and The Harbour Restaurant, you'll find culinary excellence just a short distance away. For a more local experience, head to Mark Bennett or Bank by Nicholas James at Penn Hill for charming spots offering delicious meals in a welcoming atmosphere. Whether you're celebrating or enjoying a relaxed meal, this seaside dining scene is sure to impress.

A person is kitesurfing on a wave, silhouetted against a bright sunset sky. The person is holding onto the control bar of the kite, and the wave is breaking around them, creating a large splash of water. The overall scene is dynamic and adventurous.

LIVE THE ADVENTURE

Unleash your adventurous spirit with endless watersport opportunities

From the thrill of kitesurfing to the tranquility of paddleboarding, the surrounding coastline offers endless opportunities for water enthusiasts. Whether you're seeking high-energy fun or a relaxing day on the water, this vibrant coastal location has something for everyone. Explore the waters like never before and experience the beauty of the ocean in a whole new way.

BEAUTY. ALL AROUND

A still life composition for a spa advertisement. In the foreground, a lit yellow candle sits on the left, and a white orchid flower is in the center. Behind them, another lit candle and another white orchid are visible. To the right, a stack of folded brown towels is partially visible. In the background, a dark wooden bowl contains a lit candle and a small glass bottle. The overall lighting is warm and soft, creating a relaxing atmosphere.

DORSET'S PREMIER SPAS

Indulge in ultimate relaxation at Dorset's finest luxury spas, each offering a unique experience to rejuvenate your body and mind.

Escape to the renowned Chewton Glen Spa, where holistic treatments and a peaceful ambience await. The Harbour Hotel Spa offers stunning coastal views and an extensive range of indulgent treatments. For a woodland sanctuary, visit Lime Wood's Herb House Spa, providing a range of treatments in a tranquil setting. The Nici Hotel Spa offers a chic, contemporary experience, perfect for those seeking luxury and tranquillity in a modern environment.

YOUR BRUSCIA HOME

Every Bruscia residence is a quiet celebration of thoughtful design and refined finishes. From the moment you step inside, a sense of calm sophistication unfolds — with open, considered layouts, natural textures, and a focus on quality in every detail. Tailored kitchens, sleek bathrooms, and carefully selected materials bring depth and character to each space.

Soft daylight pours through expansive windows, framing views of swaying pines and layered greenery — a reminder of the home's harmonious connection to nature. At Bruscia, living is effortless, elegant, and intimately tied to the landscape beyond.

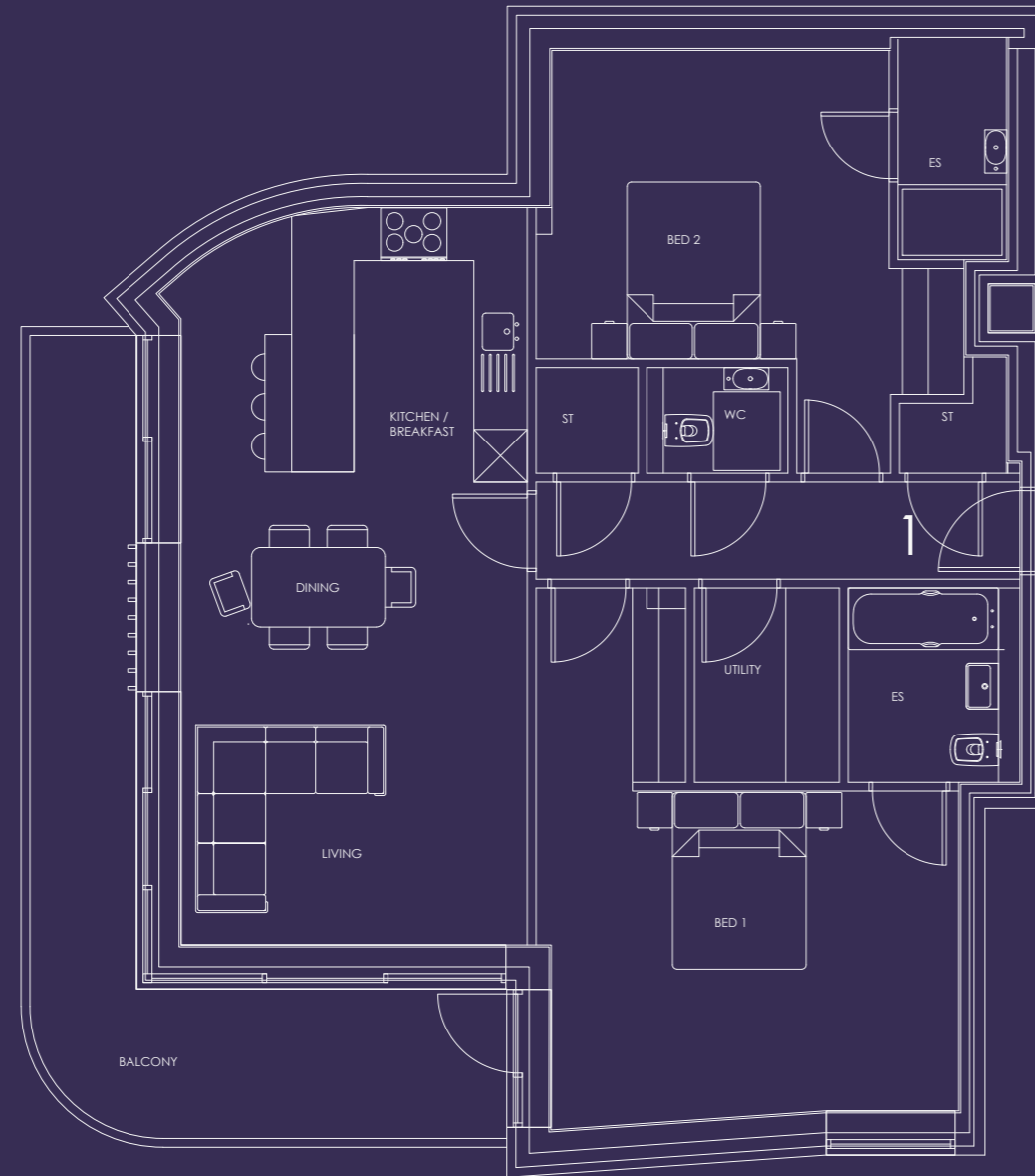
BR



YOUR HOME

Apartment 1: Aurora

Total Area: 1017.4 Sqft / 94.52 Sqm



Measurements:

Kitchen/Dinning/Living	89.98" x 41.87"	(8.36m x 3.89m)
Bed 1	51.13" x 38.97"	(4.75m x 3.62m)
Ensuite	23.79" x 20.88"	(2.21m x 1.94m)
Bed 2	51.77" x 37.67"	(4.81m x 3.50m)
Ensuite	27.23" x 13.24"	(2.53m x 1.23m)
WC	17.11" x 12.92"	(1.59m x 1.20m)
Utility	17.54" x 23.79"	(1.63m x 2.21m)
Store	25.40" x 27.23"	(2.36m x 2.53m)

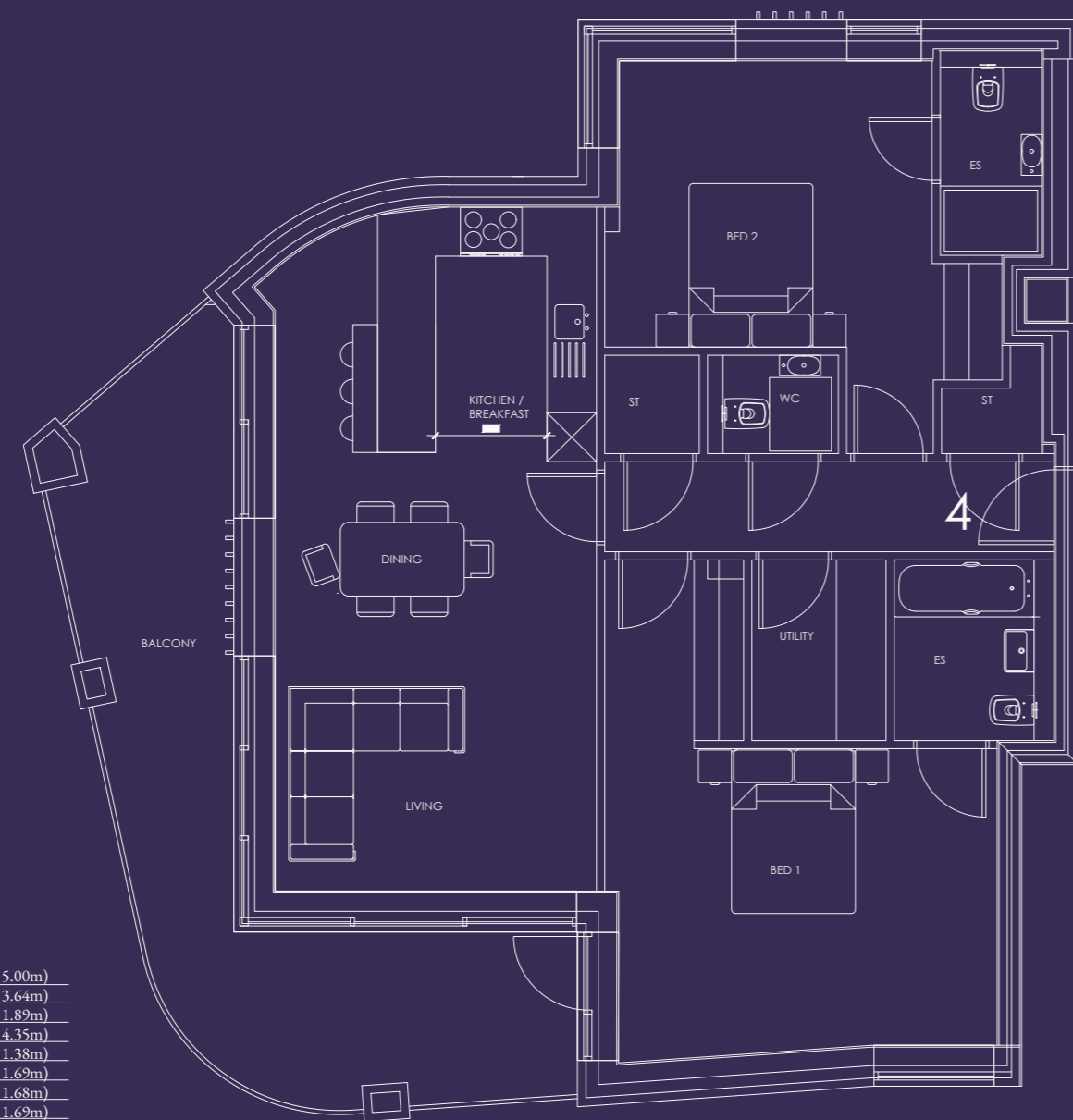
Room dimensions are approximate and should not be taken as exact measurements.

AURORA — A SYMBOL OF NEW
BEGINNINGS, HOPE, AND THE
GENTLE RHYTHM OF RENEWAL.

YOUR HOME

Apartment 2: Solara

Total Area: 1017.5 Sqft / 94.53 Sqm



Measurements:

Kitchen/Dinning/Living	75.35" x 53.82" (7.00m x 5.00m)
Bed 1	52.42" x 39.18" (4.87m x 3.64m)
Ensuite	24.00" x 20.34" (2.23m x 1.89m)
Bed 2	30.03" x 46.82" (2.79m x 4.35m)
Ensuite	29.06" x 14.85" (2.70m x 1.38m)
WC	12.92" x 18.19" (1.20m x 1.69m)
Utility	16.68" x 18.08" (1.55m x 1.68m)
Store	10.76" x 18.19" (1.00m x 1.69m)

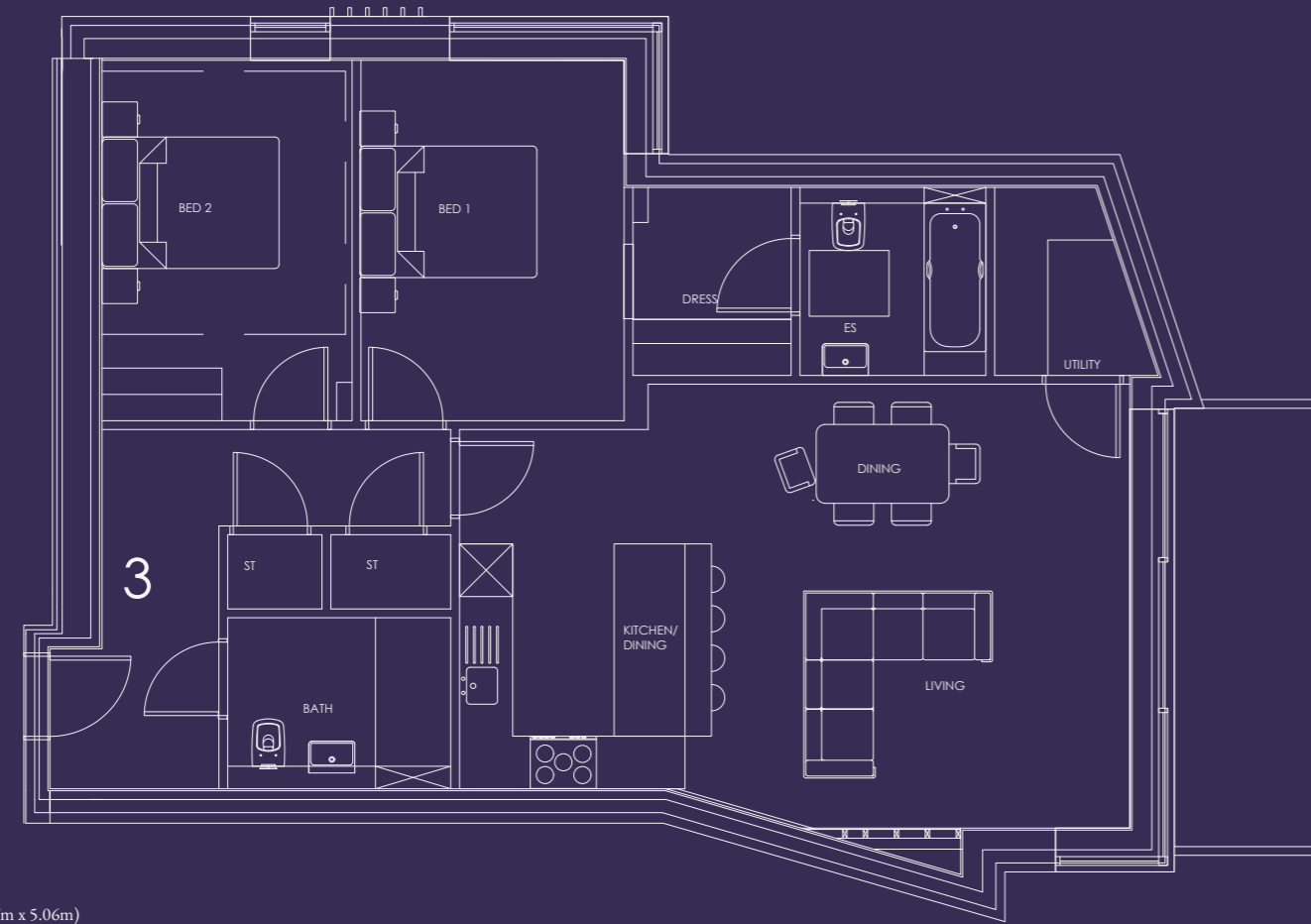
Room dimensions are approximate and should not be taken as exact measurements.

SOLARA — A SYMBOL OF WARMTH,
VITALITY, AND THE QUIET
BRILLIANCE OF ILLUMINATION.

YOUR HOME

Apartment 3: Emerald

Total Area: 979.5 Sqft/ 91 Sqm



Measurements:

Kitchen/Breakfast/Dinning/Living	81.48' x 54.47' (7.57m x 5.06m)
Bed 1	31.97' x 44.24' (2.97m x 4.11m)
Ensuite	22.60' x 23.03' (2.10m x 2.14m)
Bed 2	30.46' x 44.35' (2.83m x 4.12m)
WC	27.13' x 20.99' (2.52m x 1.95m)
Utility	23.03' x 19.91' (2.14m x 1.85m)
Store	26.05' x 18.19' (2.42m x 1.69m)

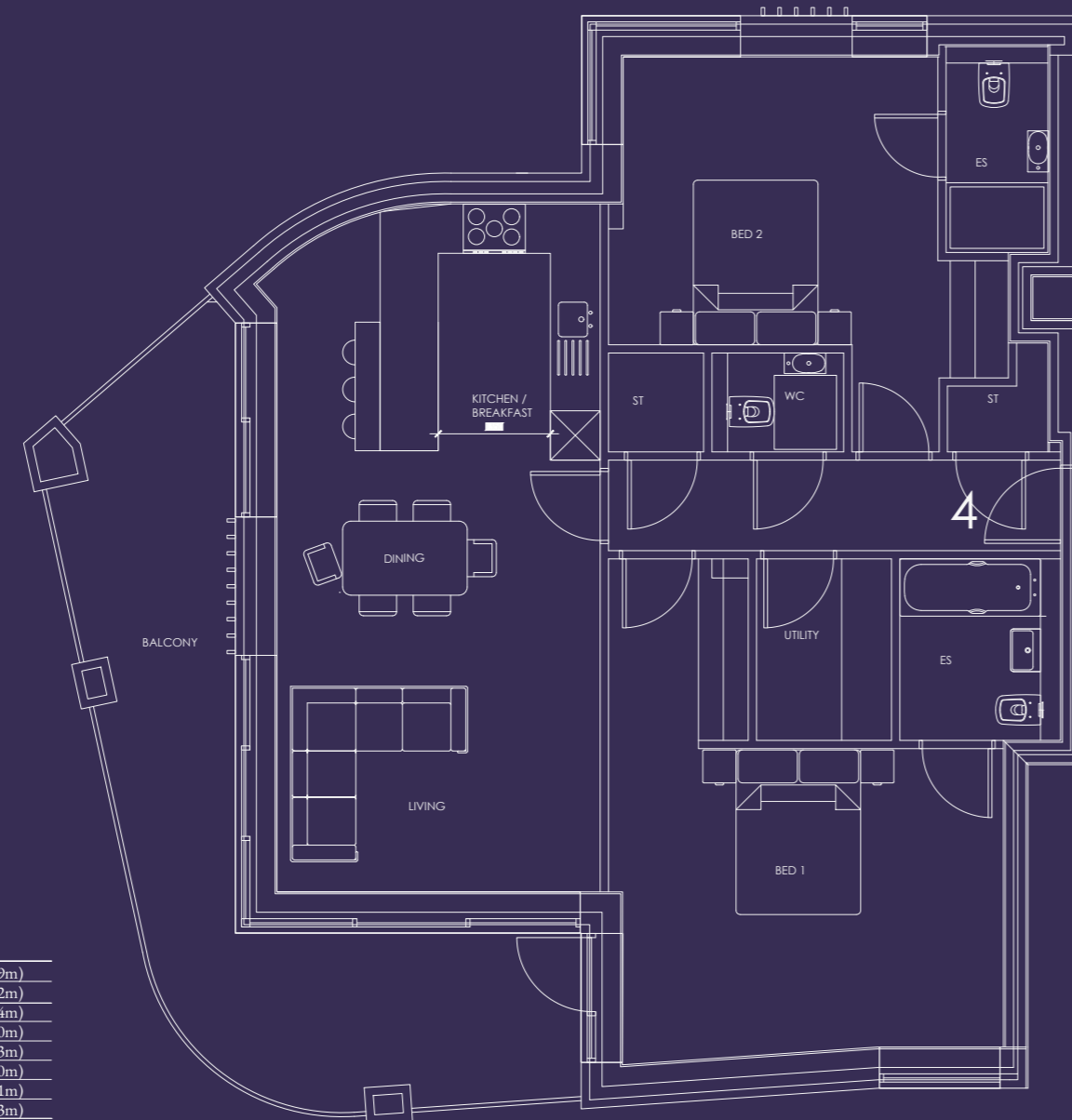
Room dimensions are approximate and should not be taken as exact measurements.

EMERALD — A SYMBOL OF LOVE,
GROWTH, AND RENEWAL, ENRICHED
WITH WISDOM AND HEALING.

YOUR HOME

Apartment 4: Indigo

Total Area: 1017.4 Sqft / 94.52 Sqm



Measurements:

Kitchen/Dinning/Living	89.98" x 41.87"	(8.36m x 3.89m)
Bed 1	51.13" x 38.97"	(4.75m x 3.62m)
Ensuite	23.79" x 20.88"	(2.21m x 1.94m)
Bed 2	51.77" x 37.67"	(4.81m x 3.50m)
Ensuite	27.23" x 13.24"	(2.53m x 1.23m)
WC	17.11" x 12.92"	(1.59m x 1.20m)
Utility	17.54" x 23.79"	(1.63m x 2.21m)
Store	25.40" x 27.23"	(2.36m x 2.53m)

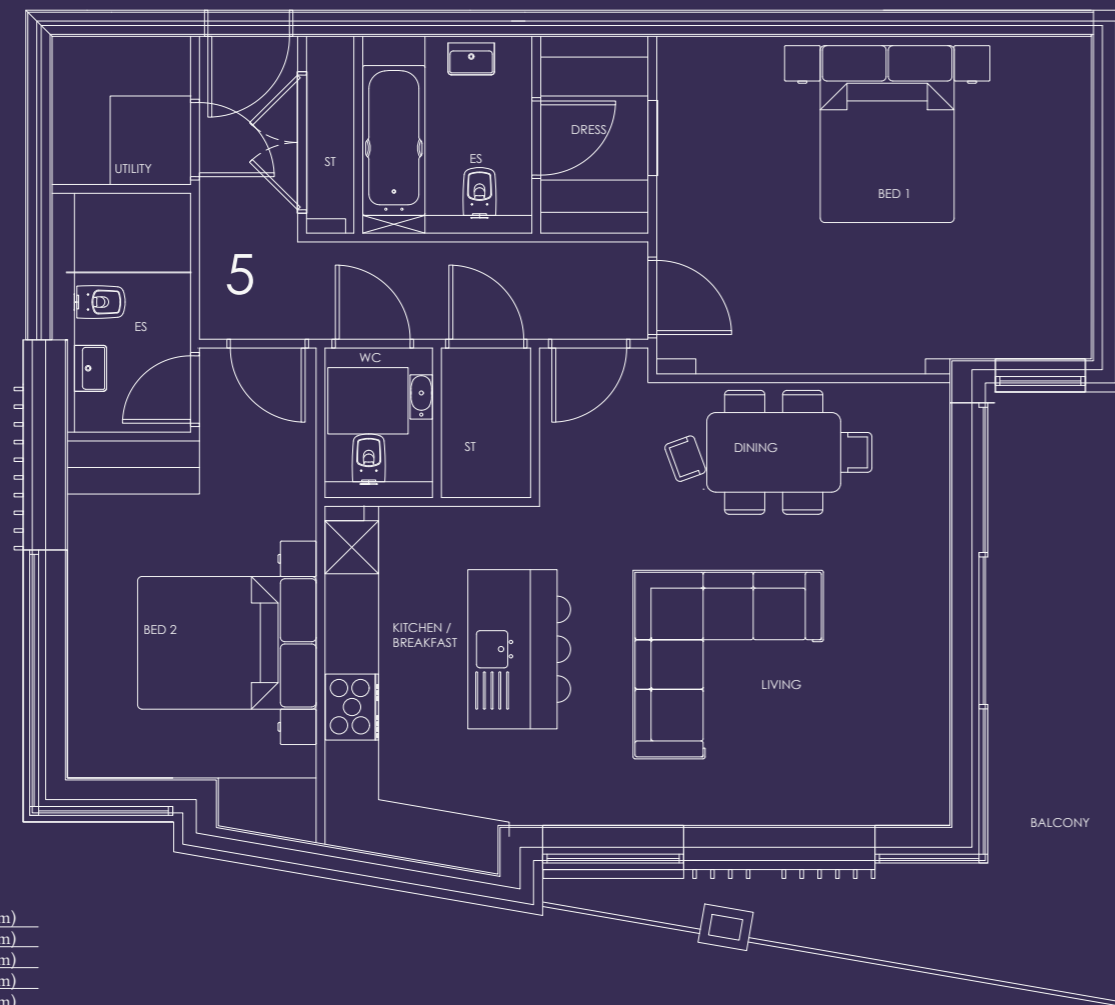
Room dimensions are approximate and should not be taken as exact measurements.

INDIGO — A SYMBOL OF INTUITION,
WISDOM, AND HIGHER LEVELS OF
CONSCIOUSNESS.

YOUR HOME

Apartment 5: Viridian

Total Area: 1017.5 Sqft / 94.53 Sqm



Measurements:

Kitchen/Dinning/Living	75.35" x 53.82" (7.00m x 5.00m)
Bed 1	52.42" x 39.18" (4.87m x 3.64m)
Ensuite	24.00" x 20.34" (2.23m x 1.89m)
Bed 2	30.03" x 46.82" (2.79m x 4.35m)
Ensuite	29.06" x 14.85" (2.70m x 1.38m)
WC	12.92" x 18.19" (1.20m x 1.69m)
Utility	16.68" x 18.08" (1.55m x 1.68m)
Store	10.76" x 18.19" (1.00m x 1.69m)

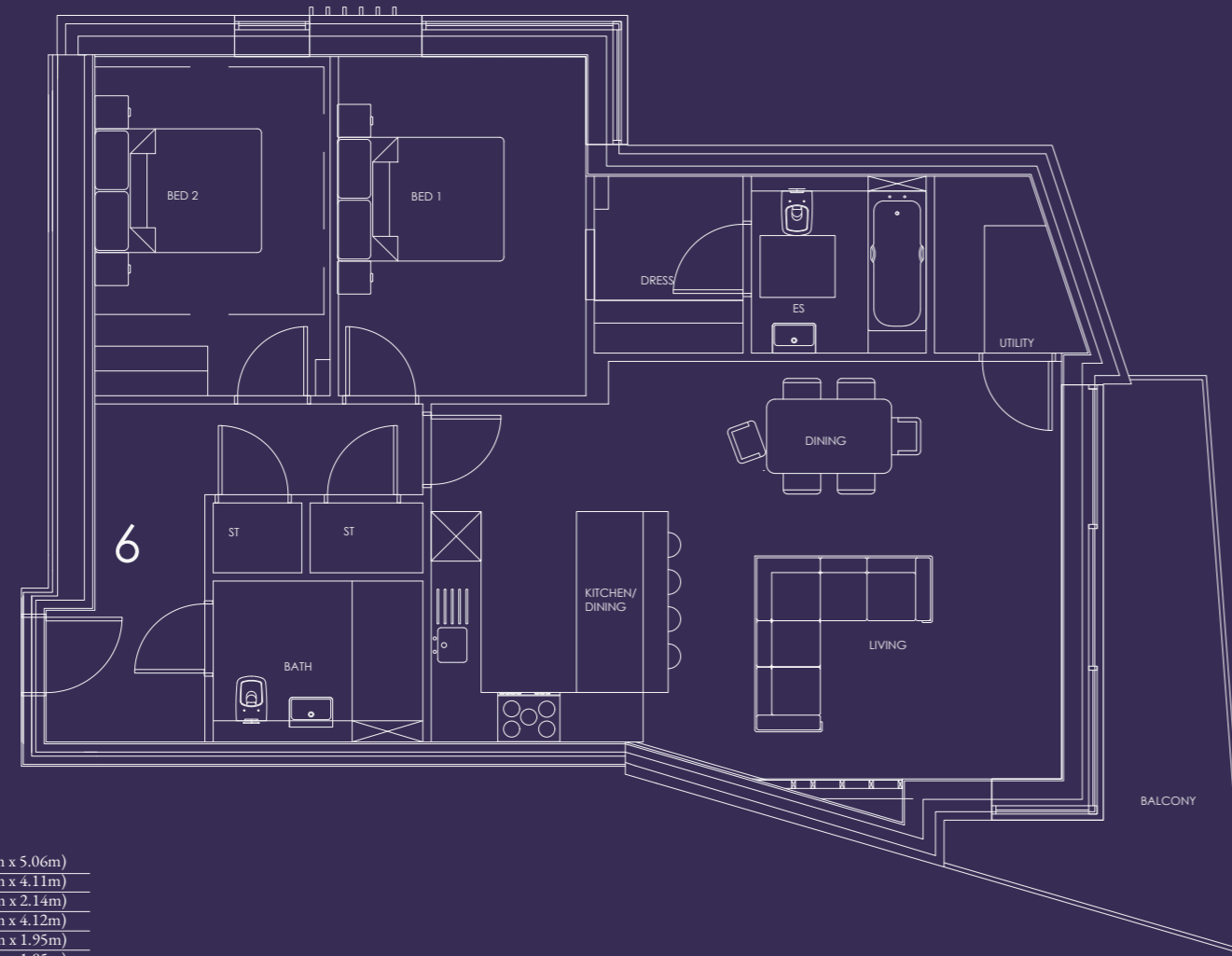
Room dimensions are approximate and should not be taken as exact measurements.

VIRIDIAN — A SYMBOL OF NATURE'S
RHYTHM, EVER-UNFOLDING
GROWTH, AND THE QUIET
RESURGENCE OF REBIRTH.

YOUR HOME

Apartment 6: Iridescence

Total Area: 979.5 Sqft/ 91 Sqm



Measurements:

Kitchen/Breakfast/Dinning/Living	81.48' x 54.47' (7.57m x 5.06m)
Bed 1	31.97' x 44.24' (2.97m x 4.11m)
Ensuite	22.60' x 23.03' (2.10m x 2.14m)
Bed 2	30.46' x 44.35' (2.83m x 4.12m)
WC	27.13' x 20.99' (2.52m x 1.95m)
Utility	23.03' x 19.91' (2.14m x 1.85m)
Store	26.05' x 18.19' (2.42m x 1.69m)

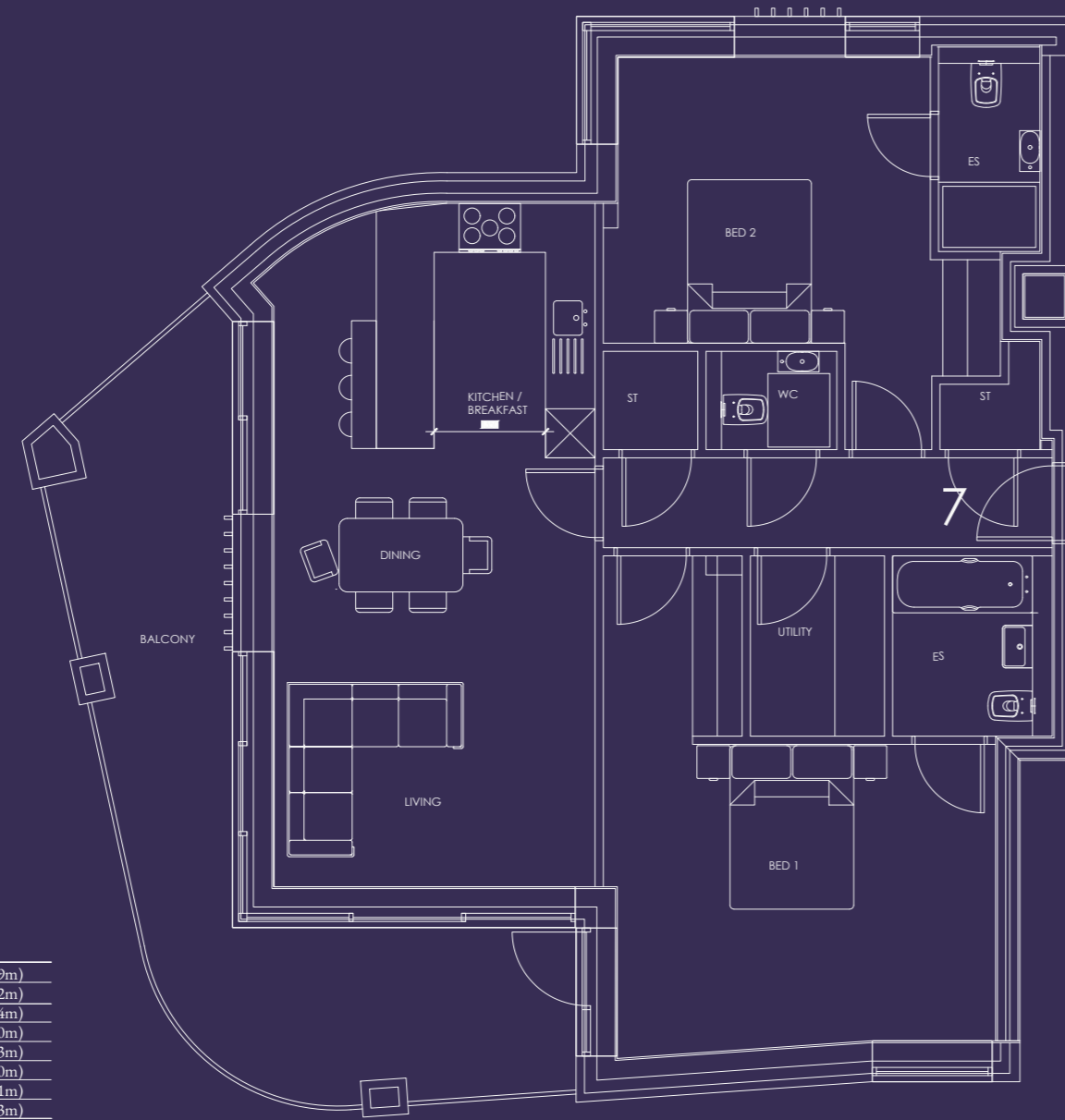
Room dimensions are approximate and should not be taken as exact measurements.

IRIDESCENCE — A SYMBOL OF
DEEP WISDOM AND THE GRACEFUL
ABILITY TO SEE THINGS FROM A
NEW ANGLE.

YOUR HOME

Apartment 7: Cyan

Total Area: 1017.4 Sqft / 94.52 Sqm



Measurements:

Kitchen/Dinning/Living	89.98" x 41.87"	(8.36m x 3.89m)
Bed 1	51.13" x 38.97"	(4.75m x 3.62m)
Ensuite	23.79" x 20.88"	(2.21m x 1.94m)
Bed 2	51.77" x 37.67"	(4.81m x 3.50m)
Ensuite	27.23" x 13.24"	(2.53m x 1.23m)
WC	17.11" x 12.92"	(1.59m x 1.20m)
Utility	17.54" x 23.79"	(1.63m x 2.21m)
Store	25.40" x 27.23"	(2.36m x 2.53m)

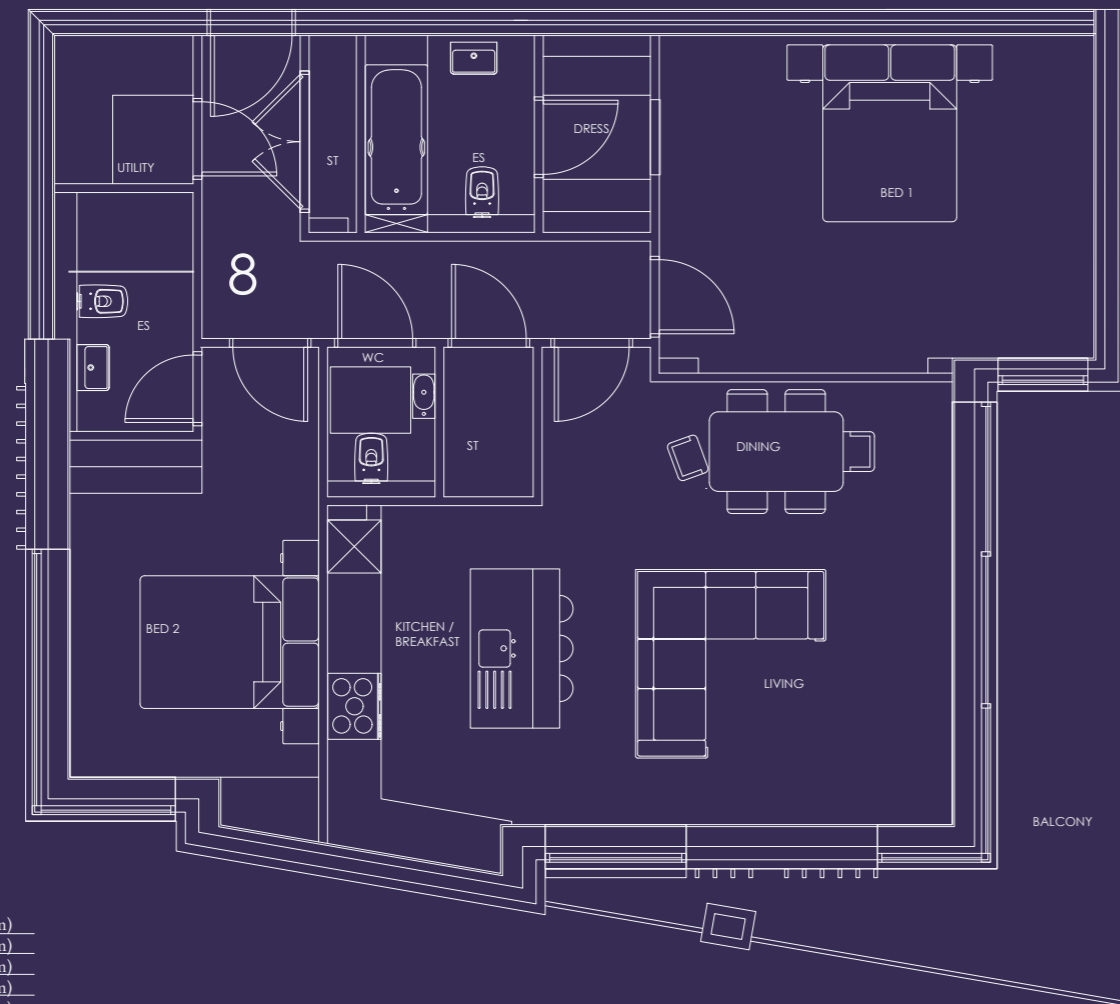
Room dimensions are approximate and should not be taken as exact measurements.

CYAN — A SYMBOL OF CALM,
MENTAL CLARITY, AND DEEP
TRANQUILITY.

YOUR HOME

Apartment 8: Zephyr

Total Area: 1017.5 Sqft / 94.53 Sqm



Measurements:

Kitchen/Dinning/Living	75.35" x 53.82" (7.00m x 5.00m)
Bed 1	52.42" x 39.18" (4.87m x 3.64m)
Ensuite	24.00" x 20.34" (2.23m x 1.89m)
Bed 2	30.03" x 46.82" (2.79m x 4.35m)
Ensuite	29.06" x 14.85" (2.70m x 1.38m)
WC	12.92" x 18.19" (1.20m x 1.69m)
Utility	16.68" x 18.08" (1.55m x 1.68m)
Store	10.76" x 18.19" (1.00m x 1.69m)

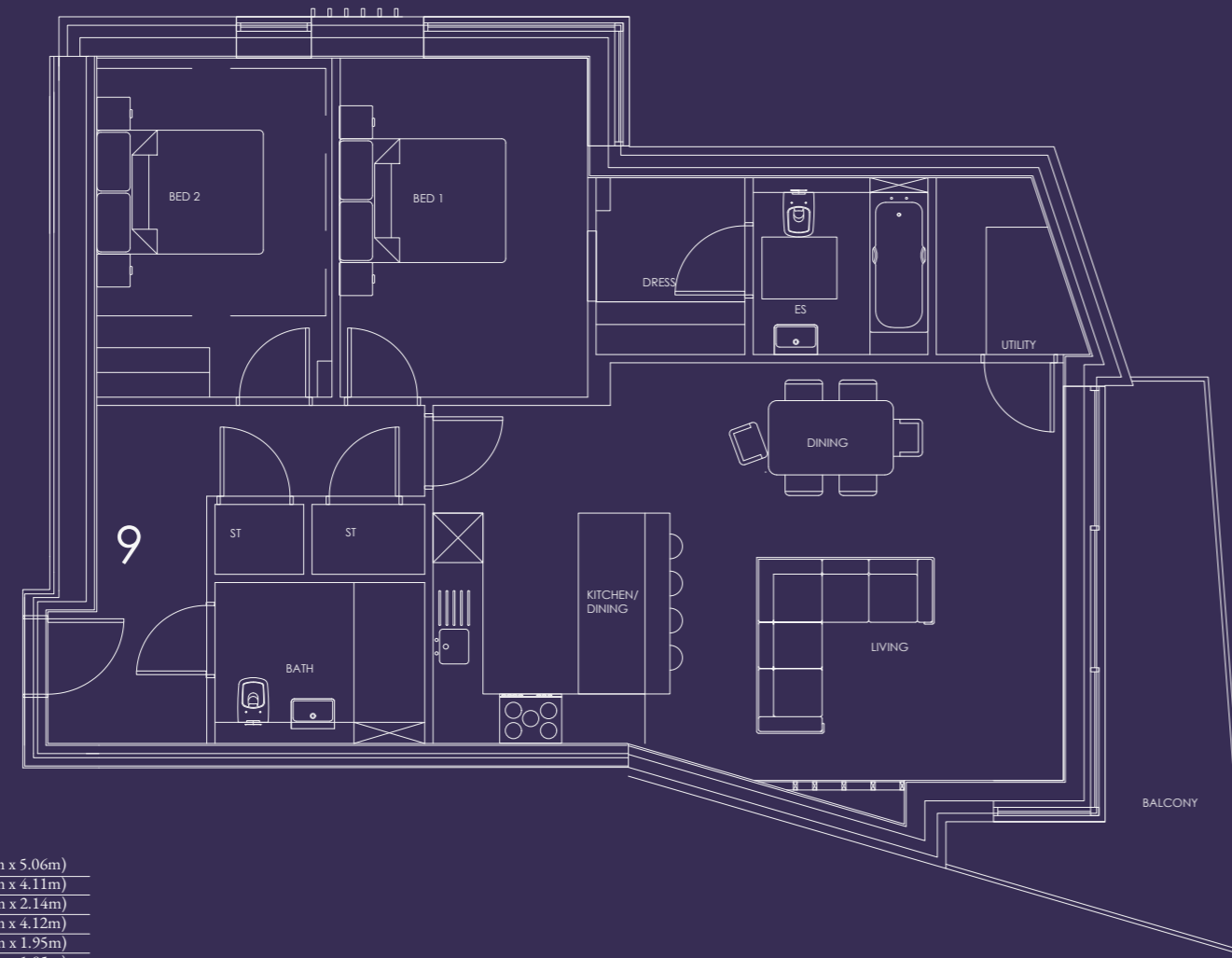
Room dimensions are approximate and should not be taken as exact measurements.

ZEPHYR — A SYMBOL OF CALM AND
PEACE, DEFINED BY LIGHTNESS AND
EFFORTLESS EASE.

YOUR HOME

Apartment 9: Velora

Total Area: 979.5 Sqft/ 91 Sqm



Measurements:

Kitchen/Breakfast/Dinning/Living	81.48' x 54.47' (7.57m x 5.06m)
Bed 1	31.97' x 44.24' (2.97m x 4.11m)
Ensuite	22.60' x 23.03' (2.10m x 2.14m)
Bed 2	30.46' x 44.35' (2.83m x 4.12m)
WC	27.13' x 20.99' (2.52m x 1.95m)
Utility	23.03' x 19.91' (2.14m x 1.85m)
Store	26.05' x 18.19' (2.42m x 1.69m)

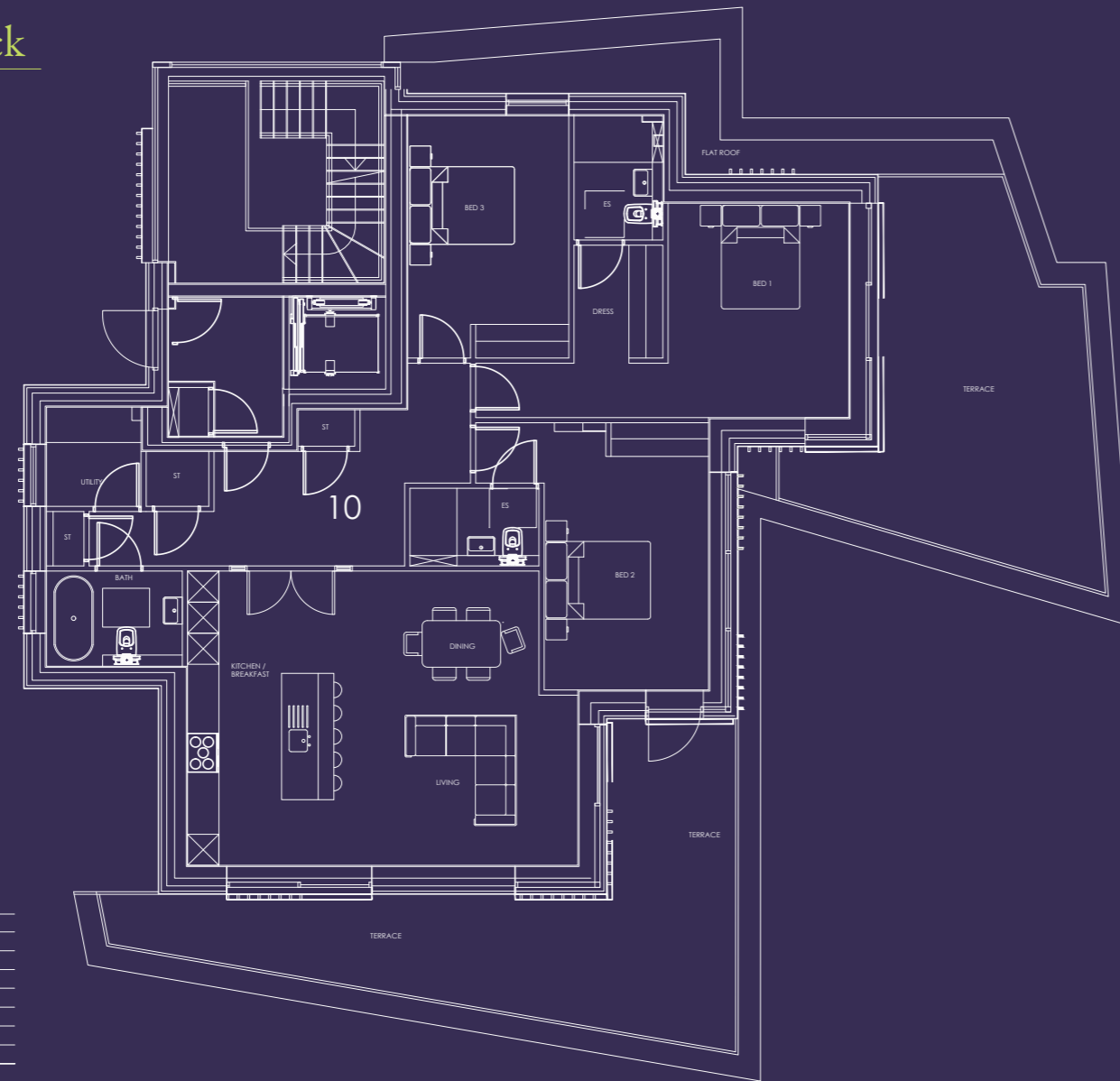
Room dimensions are approximate and should not be taken as exact measurements.

VELORA — A SYMBOL OF VITALITY
AND VIGOUR, EMBODYING WELL-
BEING AND QUIET STRENGTH.

YOUR HOME

Apartment 10: The Peacock

Total Area: 1,428.1 Sqft / 132.67 Sqm



Measurements:

Kitchen/Dinning/Living	80.30' x 61.14'	(7.46m x 5.68m)
Bed 1	44.56' x 37.67'	(4.14m x 3.50m)
Ensuite	25.83' x 18.30'	(2.40m x 1.70m)
Bed 2	55.54' x 33.91'	(5.16m x 3.15m)
Ensuite	26.59' x 16.15'	(2.47m x 1.50m)
Bed 3	41.01' x 50.38'	(3.81m x 4.68m)
Ensuite	18.30' x 25.83'	(1.70m x 2.40m)
WC	19.81' x 27.88'	(1.84m x 2.59m)
Utility	20.67' x 19.59'	(1.92m x 1.82m)
Store	11.73' x 12.81'	(1.09m x 1.19m)

Room dimensions are approximate and should not be taken as exact measurements.

THE PEACOCK — A SYMBOL OF SELF-
EXPRESSION, CONFIDENCE, AND
THE CELEBRATION OF YOUR TRUEST
SELF.

YOUR HOME



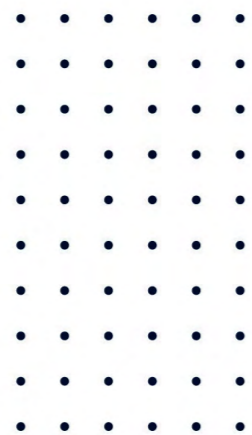
FEATHERLIGHT
GRACE

INTERIOR INSPIRATION



SILENT
BRILLIANCE

INTERIOR INSPIRATION



fortitudo

BUILDING THE FUTURE

At Fortitudo, we believe a home should be more than just a place, it should be a reflection of who you are. Through visionary design and masterful craftsmanship, we create spaces that not only enhance everyday living but also invite you to express your individuality.

Our work spans a variety of sectors, including **Residential**, **Purpose-Built Student Accommodation**, **Industrial** and **Roadside Retail**, each shaped with precision, purpose, and a commitment to lasting quality.

Bruscia captures the essence of this approach. A place where architecture, nature, and personal expression exist in harmony. Where refined finishes meet thoughtful form, and where you're invited to truly reveal your true colours.

This is the Fortitudo way of living.

PROPERTY DEVELOPER

fortitudo